



# SIGNS AND SYMPTOMS OF HEARING LOSS IN INFANTS

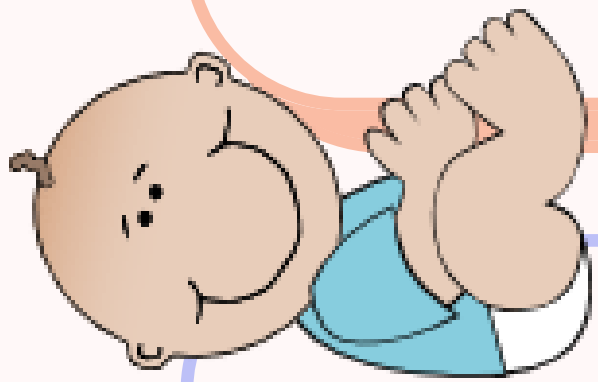


## BIRTH- 3 MONTHS

BABY DOES NOT STARTLE TO LOUD SOUNDS

## 4 - 6 MONTHS

DOES NOT SMILE WHEN SPOKEN TO



## 7 - 8 MONTHS

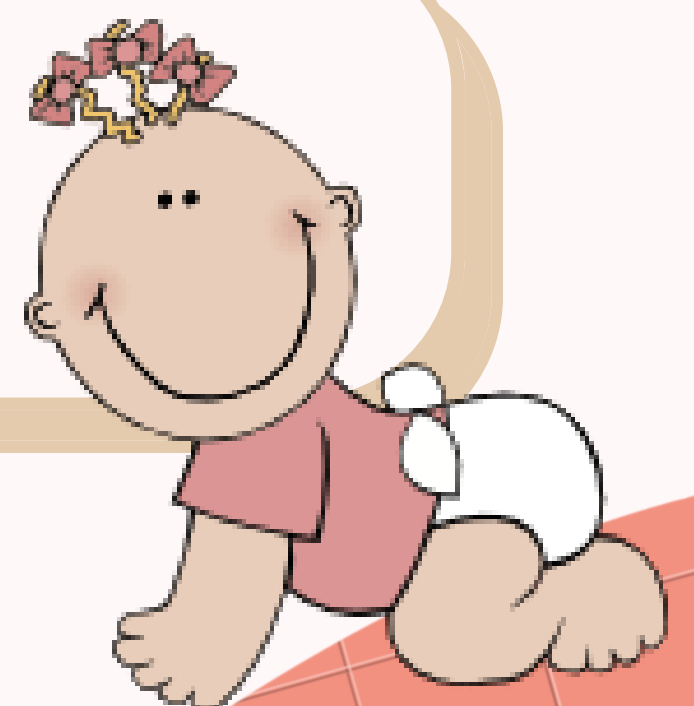
DOES NOT TURN TO NAME CALL

## 9 - 12 MONTHS

DOES NOT LISTEN TO SOUNDS AT A DISTANCE

## 13-16 MONTHS

DOES NOT FOLLOW SIMPLE VERBAL COMMANDS LIKE "CLAP YOUR HANDS



REACH OUT AND ACT EARLY

